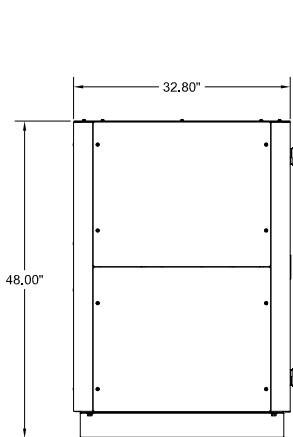
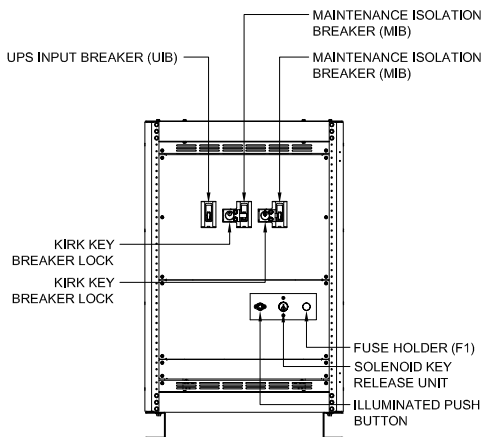


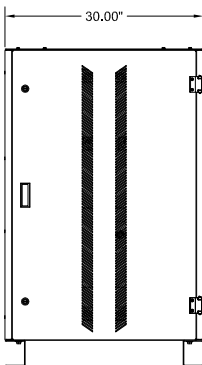
TOP VIEW



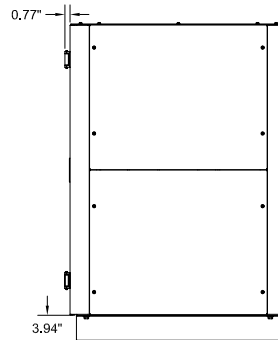
LEFT SIDE VIEW



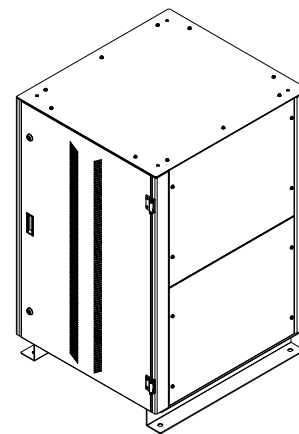
FRONT VIEW  
(DOOR REMOVED)



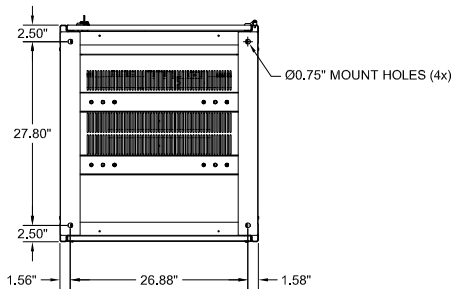
FRONT VIEW



RIGHT SIDE VIEW



ISOMETRIC VIEW



BOTTOM VIEW

NOTES:

- 1. APPROXIMATE WEIGHT: 605 LBS.
- 2. NEMA 1 TYPE ENCLOSURE.
- 3. THE CABINET IS CONSTRUCTED FROM GALVANIZED STEEL.
- 4. THE CABINET IS TO BE MOUNTED THROUGH THE 0.750" HOLES IN THE CABINET LEGS. THE LEGS ARE FORMED FROM 10 GAUGE STEEL.
- 5. FINISH IS POWDER COAT ON ALL EXTERNAL AND VISIBLE SURFACES. INTERIOR PANELS AND MOUNT BRACKETS ARE GALVANIZED FINISH.
- 6. CABINET LEGS ARE REVERSIBLE FOR EASY ACCESS TO CABINET FLOOR MOUNTING HARDWARE.

90856 SERIES MAINTENANCE BYPASS CABINET WITH TRANSFORMER			
10-20 KVA, 120V/208V, 3PH/4W 3 BREAKER			
INTERLOCK CONFIGURATION 5			
DIMENSIONS ARE IN INCHES		INITIALS	DATE
TOLERANCES:		DRAWN	3/12/12
DECIMALS: .XX ± .13	ANGLES: ±1°	PJC	
.XXX ± .062		CHECKED	11/20/2014
MATERIAL: SEE NOTES		PC	
FINISH: SEE NOTES			
CAD GENERATED DRAWING DO NOT MANUALLY UPDATE			
SCALE: NTS	SEE: A	REV: 1	SHEET 1 OF 2

THE INFORMATION CONTAINED IN THIS DRAWING IS THE SOLE PROPERTY OF C&C POWER, INC. ANY REPRODUCTION WITHOUT THE WRITTEN CONSENT OF C&C POWER, INC IS PROHIBITED.

**C&C POWER**  
ENGINEERED POWER PRODUCTS  
WWW.CCPower.COM  
© 2014 C&C POWER, INC.  
ALL RIGHTS RESERVED

DRAWING # 90856-ACS-SD011 REV 1

**AC INPUT TRANSFORMER RATINGS (K=0)**

KVA	PRIMARY VOLTAGE	SECONDARY VOLTAGE	FREQUENCY, HZ	MATERIAL	TEMP RISE, °C	%IZ	TP-1 EFFICIENCY, %
33	480	208Y/120	60	AL	150	4.5	97.54

**MAINTENANCE BYPASS CIRCUIT BREAKER SUMMARY**

BREAKER TYPE	BREAKER FRAME	UPS KVA	BREAKER MODEL	TRIP	AIC	WIRE RANGE
CUTLER HAMMER SERIES C	F FRAME	10-20	EDB3125	125A	22K @ 240VAC	(1) 4 - 4/0

**HIGH VOLTAGE: LINES ON H1, H2, H3**

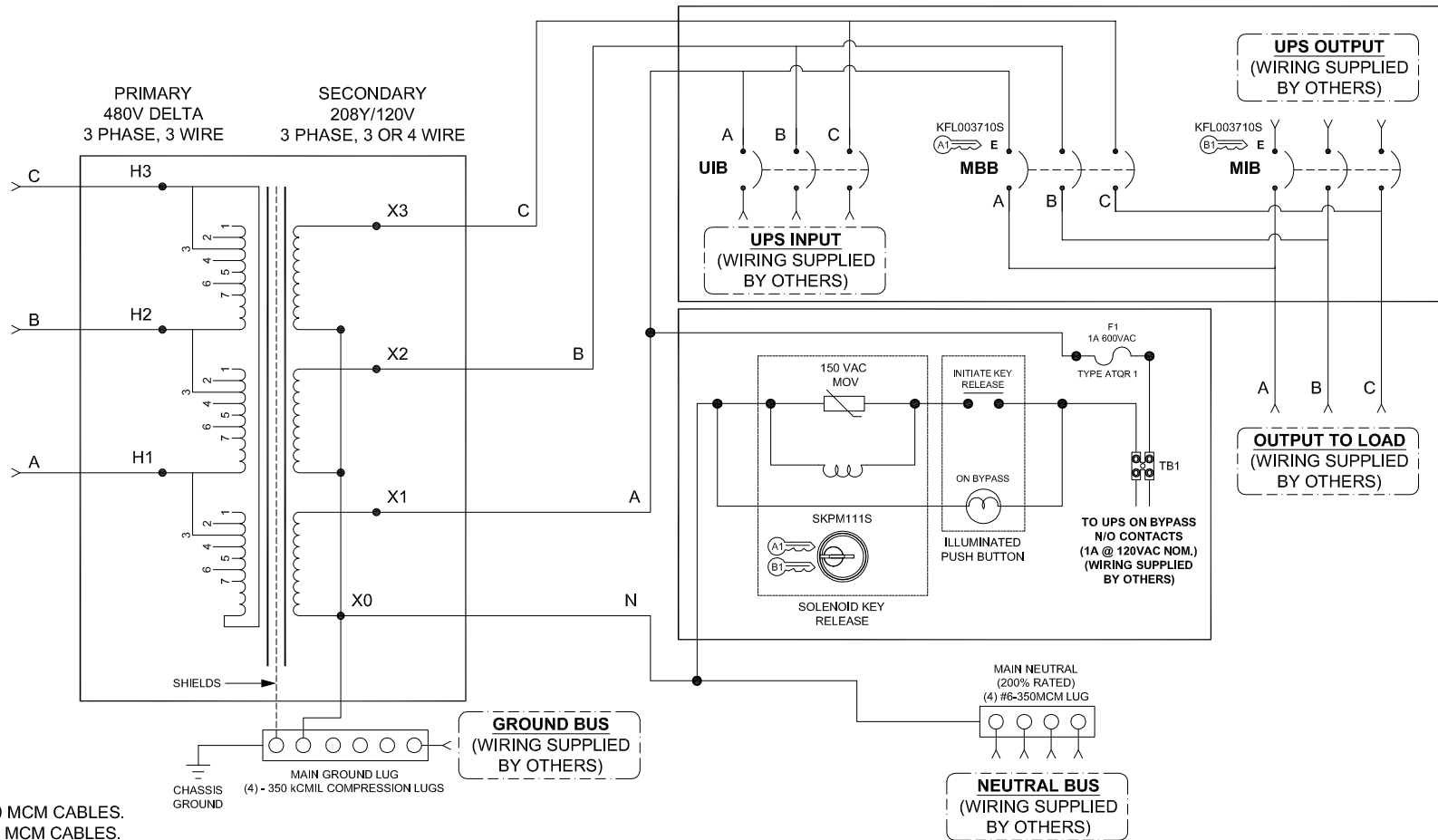
XFRMR PRIMARY (V)	CONNECT	1	2	3	4	5	6	7
480	VOLTS	504	492	480	468	456	444	432

**LOW VOLTAGE: LINES ON X1, X2, X3**

LINE - LINE	LINE - NEUTRAL
208 V	120 V

**AC INPUT BREAKER SIZING**

UPS KVA	XFRMR KVA	BREAKER SIZE
10-20	33	50A



**NOTES:**

1. MAIN NEUTRAL LUG ACCEPTS (4) #6 - 350 MCM CABLES.
2. MAIN GROUND LUG ACCEPTS (4) #6 - 350 MCM CABLES.
3. "UIB" UPS INPUT BREAKER.
4. "MBB" MAINTENANCE BYPASS BREAKER.
5. "MIB" MAINTENANCE ISOLATION BREAKER.
6. H1, H2 & H3 LANDINGS ACCEPT 2 HOLE LUGS ON 5/8" CENTERS FOR 1/4" BOLTS.
7. THIS DRAWING IS TO BE USED FOR ELECTRICAL PURPOSES ONLY AND DOES NOT REPRESENT THE ACTUAL MECHANICAL LAYOUT OF THE EQUIPMENT.

**KIRK KEY NOTES:**

1. THE "E" OR "W" NEXT TO THE INTERLOCK INDICATES THE POSITION OF THE INTERLOCK BOLT WHEN THE KEY IS REMOVABLE. "E" = EXTENDED AND "W" = WITHDRAWN.
2. THE KEY OR KEYS NEXT TO THE INTERLOCK INDICATES THE KEY NUMBER THAT FUNCTIONS WITH THE INTERLOCK.

<b>90856-A SERIES TRANSFORMER CABINET WITH MBP</b> 125A-200A, 120V/208V, 3PH/4W, 3 BREAKER MAINTENANCE BYPASS INTERLOCK CONFIGURATION 5			
DIMENSIONS ARE IN INCHES TOLERANCES: DECIMALS: .XX ± 0.3 .XXX ± 0.15	INITIALS DRAWN PJC CHECKED PC	DATE 5/31/12 11/20/2014	THE INFORMATION CONTAINED IN THIS DRAWING IS THE SOLE PROPERTY OF C&C POWER, INC. ANY REPRODUCTION WITHOUT THE WRITTEN CONSENT OF C&C POWER, INC IS PROHIBITED.
MATERIAL: SEE SHEET ONE NOTES FINISH: SEE SHEET ONE NOTES CAD GENERATED DRAWING DO NOT MANUALLY UPDATE			 ENGINEERED POWER PRODUCTS WWW.CCPower.COM © 2014 C&C POWER, INC. ALL RIGHTS RESERVED
SCALE: SEE SHEET ONE NOTES SHEET 2 OF 2			

DRAWING #: 90856-A-C5-S0012 REV 1