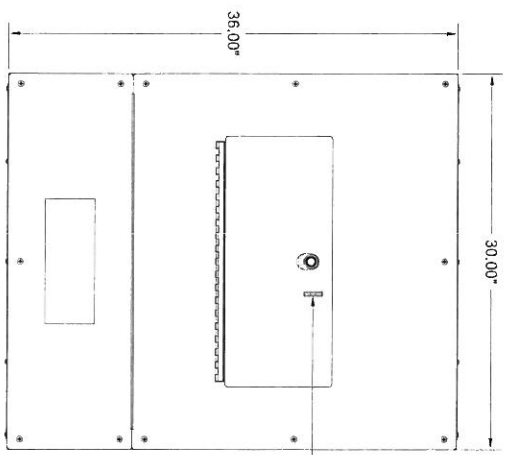
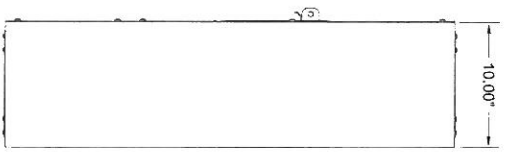


REAR VIEW



FRONT VIEW

PAD LOCK BRACKET



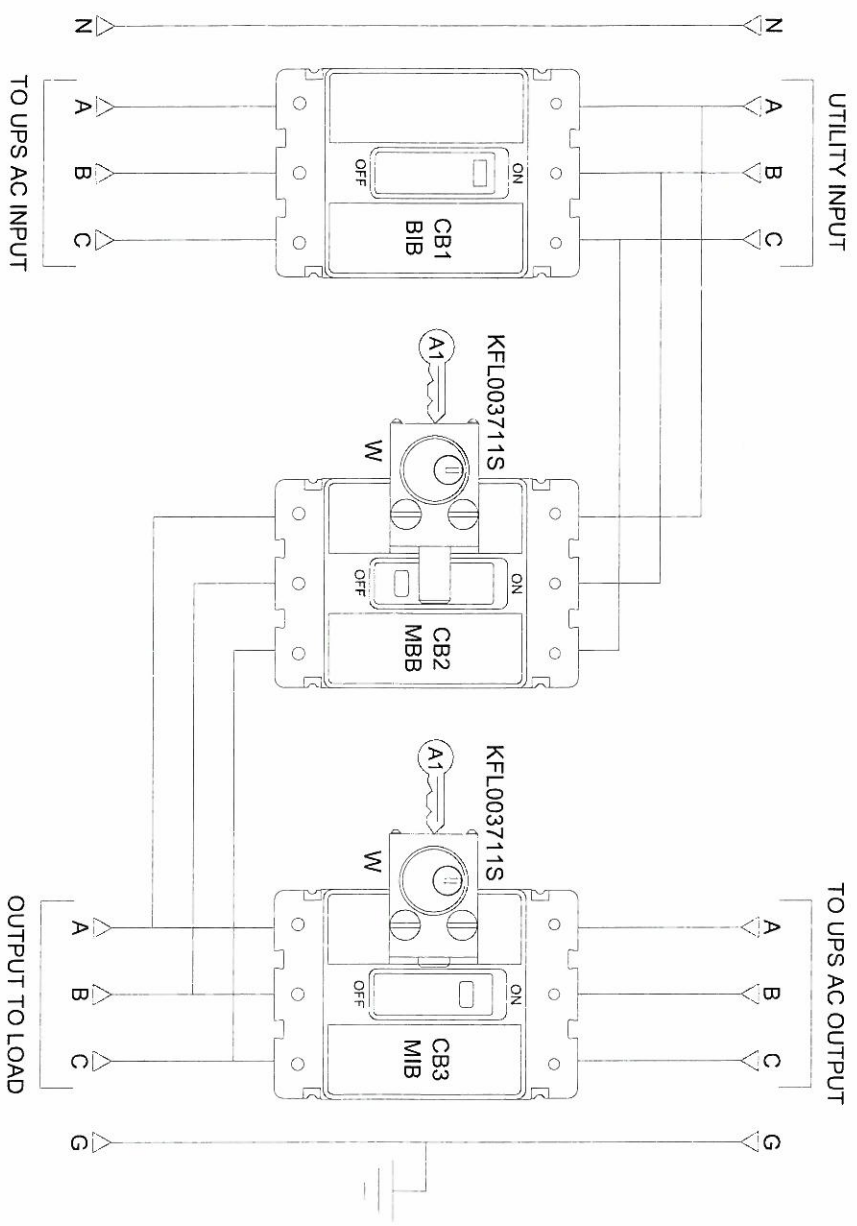
RIGHT SIDE VIEW

- NOTES:
- APPROXIMATE WEIGHT: 100 LBS.
  - NEMA 1 WALL MOUNT ENCLOSURE.
  - THE BOX & TRIM ARE CONSTRUCTED OF GALVANIZED STEEL.
  - THE CABINET IS TO BE MOUNTED THROUGH THE 0.375" HOLES IN THE BACK OF THE ENCLOSURE.
  - THE TRIM FINISH IS POWDER COAT ON ALL EXTERNAL AND VISIBLE SURFACES. BOX AND INTERNAL MOUNT BRACKETS ARE GALVANIZED FINISH.

90880 SERIES WALL MOUNT MAINTENANCE BYPASS CABINET	
15A-225A, 208V, 3PH / 4W, 3 BREAKER	
INTERLOCK CONFIGURATION 2	
DIMENSIONS IN PARENTHESIS	DATE
BOXING PJC	9/27/11
DECIMALS ANGLES	
.XX X.XX	
XXX.XXX	
UNIT: INCHES	THICKNESS
SEE NOTES	CH
DATE: 10/5/11	
CAD GENERATED DRAWING	
DO NOT MANUALLY UPDATE	
SCALE: 1" = 1"	SHEET 1 OF 2
<p><b>C&amp;C POWER</b>                  ENGINEERED POWER PRODUCTS                  949 N. Larch Ave. - Elmhurst, IL 60126                  © 2011 C&amp;C POWER, INC.                  ALL RIGHTS RESERVED</p>	

CIRCUIT BREAKER SUMMARY

BREAKER TYPE	BREAKER FRAME	BREAKER MODEL	TRIP	AIC	WIRE RANGE
CUTLER HAMMER SERIES C	F FRAME	EHD3XXX	15-100A	18K @ 240VAC	(1) 14 - 1/0
		EDB3XXX	125-225A	22K @ 240VAC	(1) 4 - 4/0
		ED3XXX	15-60A	65K @ 240VAC	(1) 14 - 1/0
		FD3XXX	70-90A	65K @ 240VAC	(1) 14 - 1/0
		ED3100	100A	65K @ 240VAC	(1) 14 - 1/0
		ED3XXX	110-225A	65K @ 240VAC	(1) 4 - 4/0



- NOTES:
- "BIB" BYPASS INPUT BREAKER
  - "MBB" MAINTENANCE BYPASS BREAKER
  - "MIB" MAINTENANCE ISOLATION BREAKER
  - BREAKERS ARE SHOWN IN NORMAL OPERATING CONDITION.
  - NEUTRAL LUG ACCEPTS (3) #6 - 350 MCM CABLES.
  - GROUND LUG ACCEPTS (3) #6 - 350 MCM CABLES.
  - THIS DRAWING IS TO BE USED FOR ELECTRICAL PURPOSES ONLY AND DOES NOT REPRESENT THE ACTUAL MECHANICAL LAYOUT OF THE EQUIPMENT.

- KIRK KEY NOTES:
- THE "E" OR "W" NEXT TO THE INTERLOCK INDICATES THE POSITION OF THE INTERLOCK BOLT WHEN THE KEY IS REMOVABLE. "E" = EXTENDED AND "W" = WITHDRAWN.
  - THE KEY OR KEYS NEXT TO THE INTERLOCK INDICATES THE KEY NUMBER THAT FUNCTIONS WITH THE INTERLOCK.

90880 SERIES WALL MOUNT MAINTENANCE BYPASS CABINET  
 15A-225A, 208V, 3PH / 4W, 3 BREAKER  
 INTERLOCK CONFIGURATION 2

DESIGNER	DATE	THE INFORMATION CONTAINED IN THIS DRAWING IS THE SOLE PROPERTY OF C&C POWER, INC. NO PART OF THIS DRAWING IS TO BE REPRODUCED OR TRANSMITTED IN ANY FORM OR BY ANY MEANS, ELECTRONIC OR MECHANICAL, INCLUDING PHOTOCOPYING, RECORDING, OR BY ANY INFORMATION STORAGE AND RETRIEVAL SYSTEM.
CHECKED	DATE	
APPROVED	DATE	

C&C POWER  
 ENGINEERED POWER PRODUCTS  
 949 N. Larch Ave. - Elmhurst, IL 60126  
 © 2011 C&C POWER, INC.  
 ALL RIGHTS RESERVED