



MopUPS[®] Express for Windows

Connectivity Solutions

MopUPS Express has two main elements, a Service layer and a GUI layer.

The MopUPS Express Service monitors UPS status in the background, logs events, initiates system shutdown and sends messages in response to various situations reported by the UPS.

When MopUPS Express is running, one of these icons will appear in the desktop taskbar



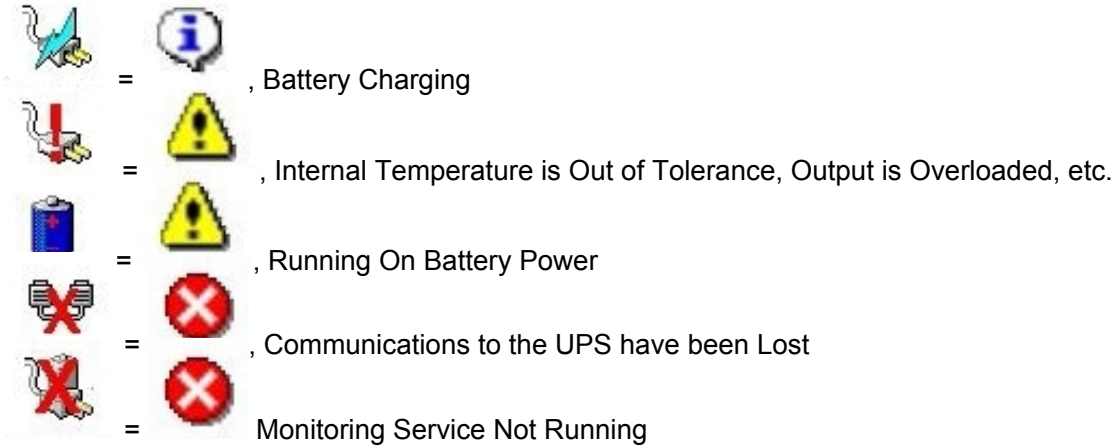
When you double click the Icon, MopUPS Express will open the MopUPS Express control window (GUI) *mopxpres.exe*.


There are three Tabs: [UPS](#), [Alarms](#) and [Options](#).

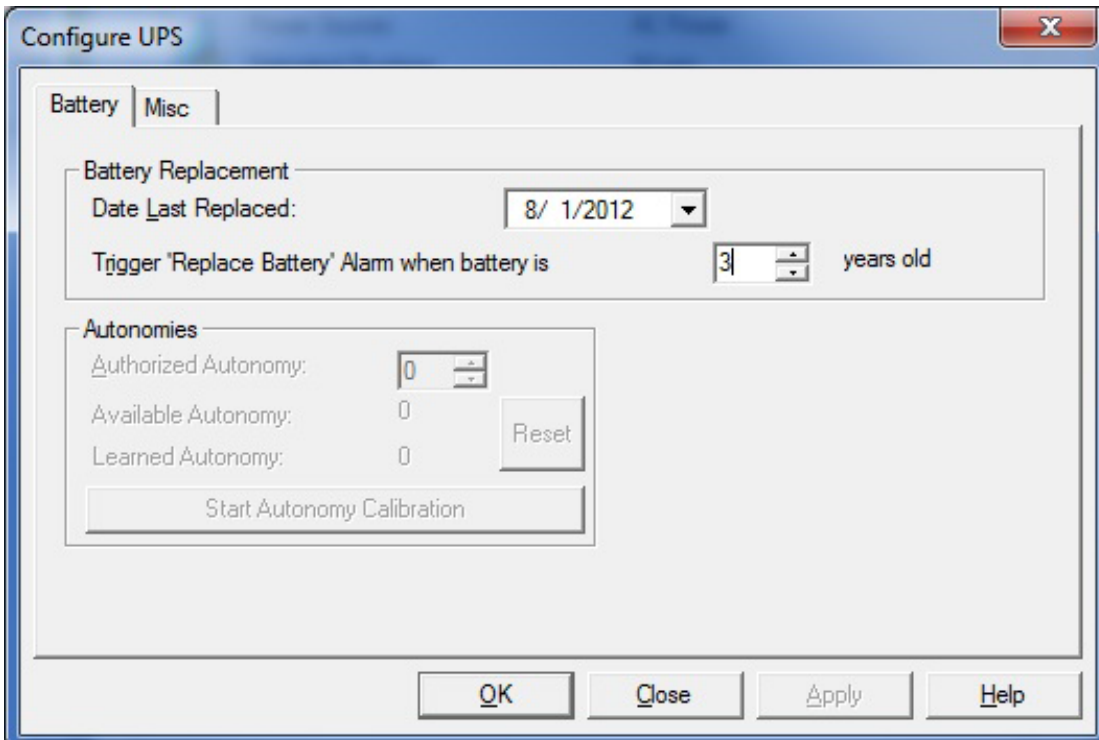
UPS

On the UPS tab are three information areas: STATUS, UPS DETAILS and CURRENT UPS ALARMS

The **Current UPS Alarms** window will explain the current alarm



Pressing  on the UPS DETAILS area opens the **Configuration** window.



BATTERY

BATTERY REPLACEMENT:

During installation, MopUPS Express will read the system date and assume this is the same date that the UPS is put in service. MopUPS Express will remind you when three years have elapsed and suggest that the UPS batteries should be replaced.

You can edit these values and make them anything you want them to be.

AUTONOMY:

Authorized Autonomy is the amount of time that you want to allow the UPS to run on battery before shutting down the system.

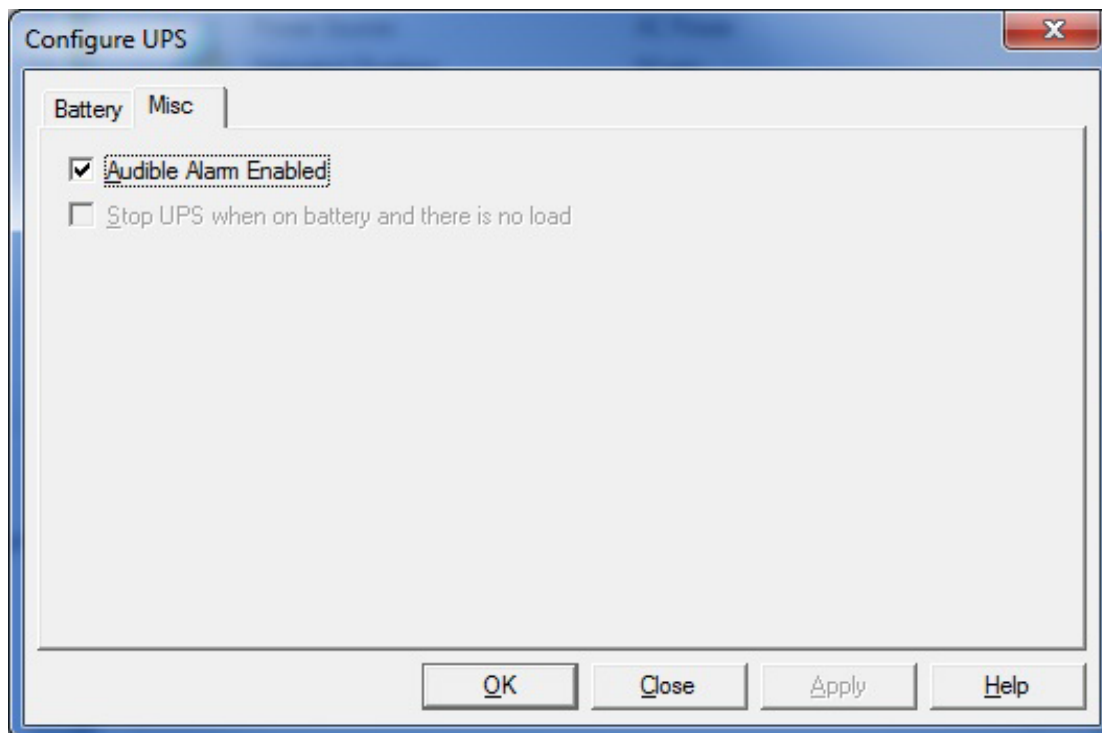
Available Autonomy is the time that MopUPS Express believes the battery is capable of delivering for your system given recharge state and load level.

Learned Autonomy is the time available when the battery is fully charged based on the last calibration or battery test.

The learned autonomy function is not available on Desk POWER Series.

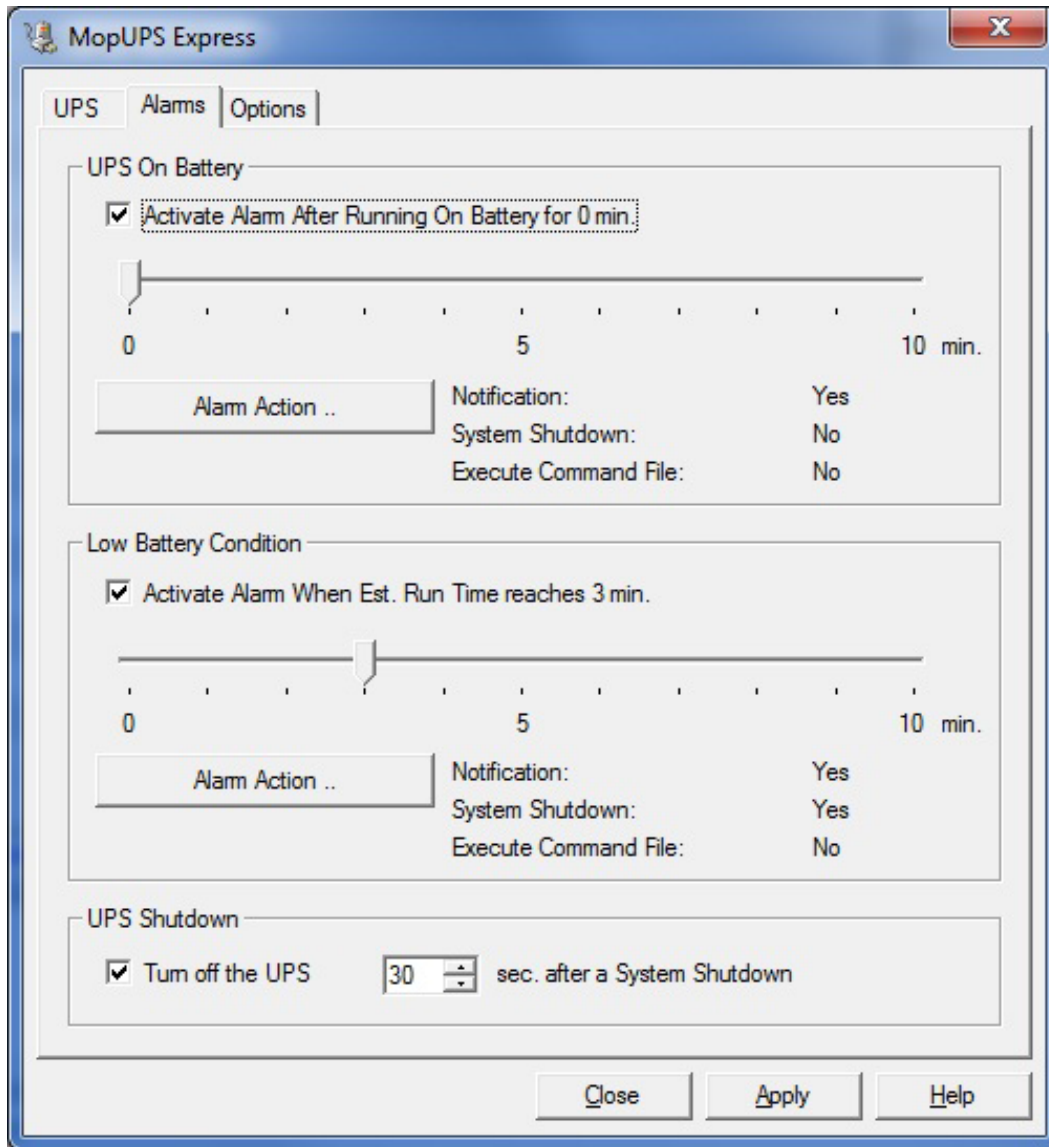
MISC:

The Miscellaneous Tab lets you silence or activate the audible alarms on the UPS unit. You can also tell MopUPS Express to ask the UPS to turn itself off if there is no load (This function may not be supported on all UPS models).



ALARMS

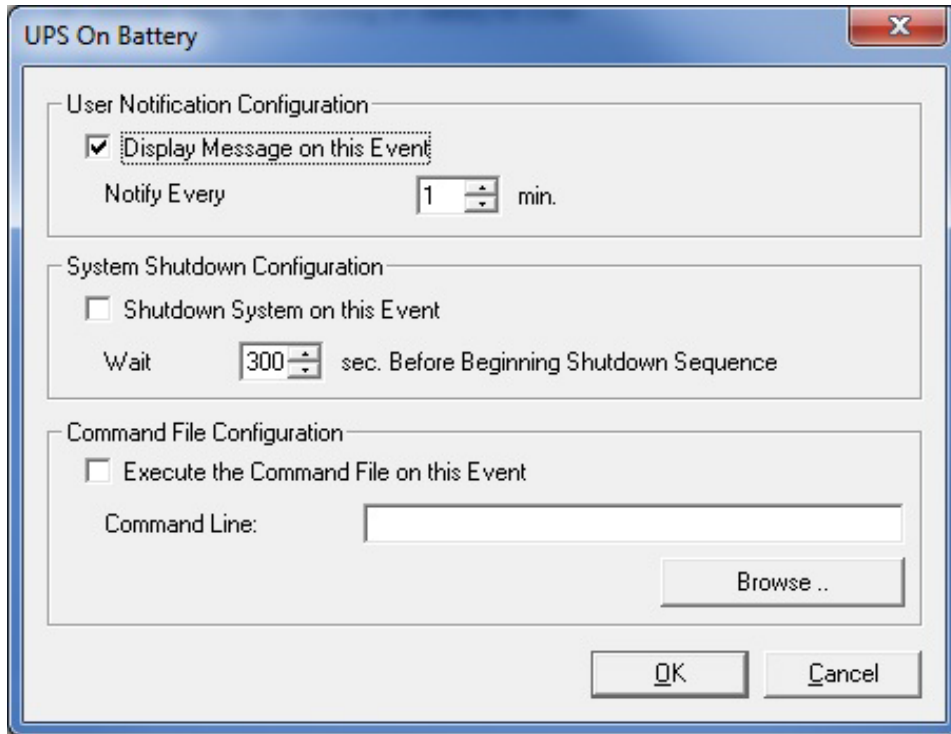
The Alarms tab on the Main Window lets you activate or deactivate the two critical alarms **UPS On Battery** and **Low Battery Condition**. You can also set the amount of delay you want MopUPS Express to count between the time the condition is detected and the time the alarm is triggered.



Press the Alarm Action button  to configure what you want MopUPS Express to do when the condition is sensed and the delay has elapsed.

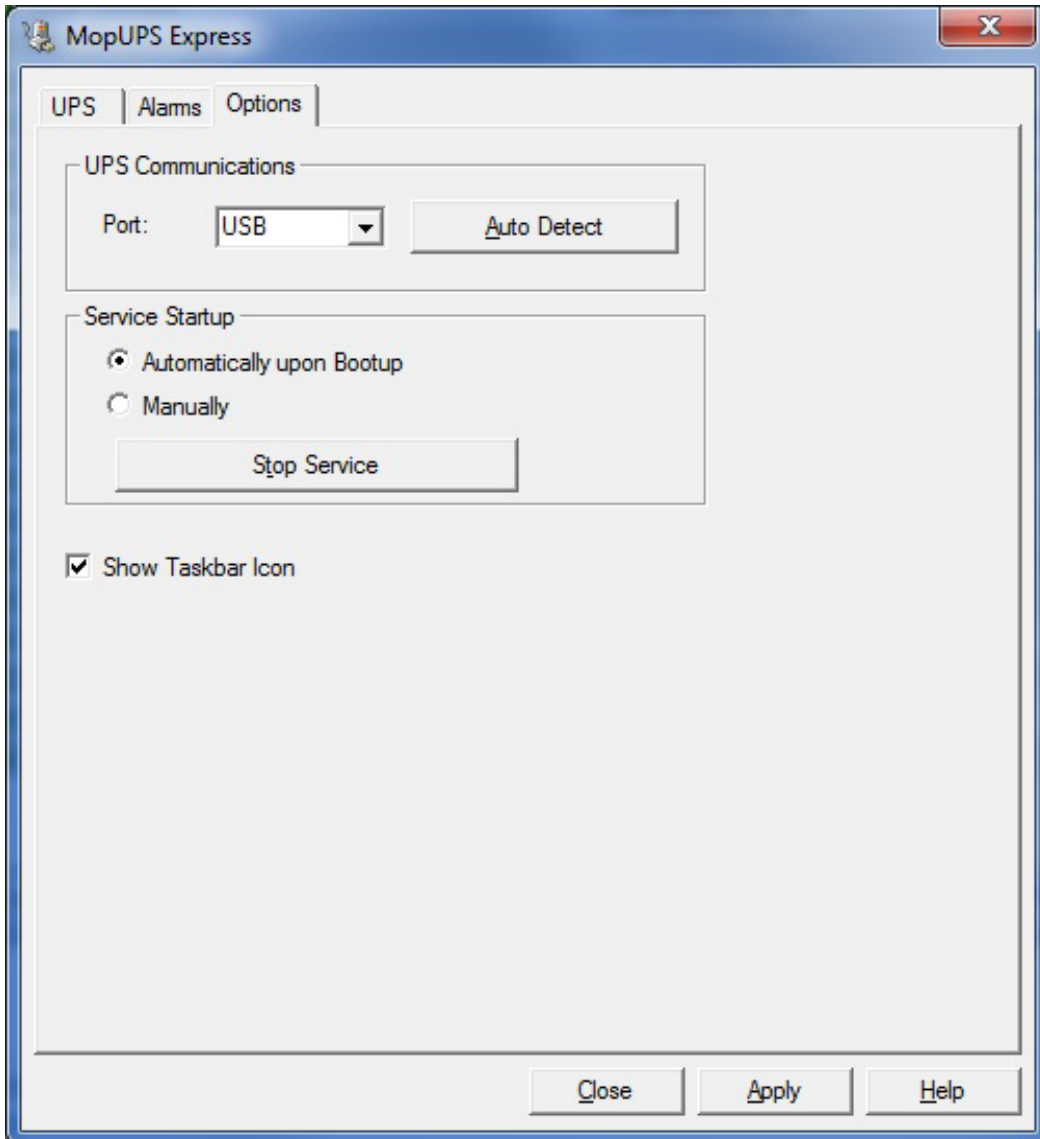
You can ask MopUPS Express to respond to the alarm by:

- displaying a pop-up message on your computer screen,
- asking windows to shut down ,
- start another program or BAT file.



OPTIONS

The OPTIONS tab on the Main window opens the controls for changing the comm port or rediscovering your UPS.



This is where you configure MopUPS Express to start automatically whenever your computer starts up or start only when you request it.

You can choose whether MopUPS Express will display the MopUPS Express icon in your desktop taskbar.